

# STANDING PROUD



# Stanzme

your child's standing companion

## CONTACT US

Visit our website

[stanzme.com](http://stanzme.com)

Phone Number

**+(888) 714-8405**

Email Address

[sales@stanzme.com](mailto:sales@stanzme.com)

Instagram

[@stanzme\\_](https://www.instagram.com/stanzme_)

LinkedIn

[linkedin.com/stanzme](https://www.linkedin.com/company/stanzme)



16 Signal Hill Rd. Brookfield, CT 06804



# ABOUT STANZME

Stanzme started to facilitate a change in pediatric care with easy to use, affordable, and reliable standers.

Our priorities lie with insurance-friendly products that help children with their physiological health and give them the confidence to engage more with every day.

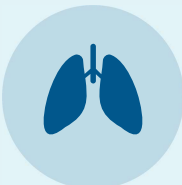
## BENEFITS

### Muscle + Bone Health



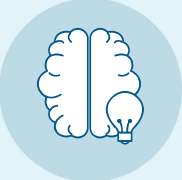
Weight-bearing in standing builds muscle strength and supports healthy bone density and joint development.

### Respiratory + Digestive Functions



An upright position improves lung expansion and supports healthier digestion and bowel function.

### Cognitive Engagement



Standing increases alertness and environmental awareness, enhancing participation in learning and therapeutic activities.

### Encourages Participation



Standing at eye level promotes inclusion, communication, confidence, and meaningful peer interaction.

# THE STANZME PRONE & SUPINE STANDERS



## PRONE STANDER

This stander is designed for comfort, stability, and ease of use. It features a **height-adjustable padded headrest**, **padded chest board**, and a **padded tray with safety strap** to provide secure upper-body support. A **pelvic stabilizing bar, lateral**

**trunk and hip pads**, and **lateral knee supports with straps** help maintain proper positioning, while **shoe holders with straps** keep feet securely in place. The **trigger-release piston** allows for smooth adjustments and supports **anterior movement up to 30°** for optimal positioning. **Locking casters** provide safe mobility and stability when needed.



## SUPINE STANDER

This stander is built to provide secure support and flexible positioning. It includes a **headrest with laterally adjustable pads**, a **padded back board**, and a **tray with adjustable angle and removable bracket** for functional use. An **anterior chest harness** and **trunk and hip straps** help

maintain proper alignment and stability. The hand crank allows smooth adjustments, supporting positioning from **90° to 180°**. **Lateral knee supports with straps** and **shoe holders with ankle and toe straps** keep the lower body safely positioned, while **locking casters** offer stability and controlled mobility.

## PRONE STANDER MEASUREMENTS

| Small  | Large   | X-Large  |
|--|---|--|
| user age + weight:<br>9 mo - 5 years<br>70 lbs | user age + weight:<br>6 - 12 years<br>120 lbs | user age + weight:<br>10 - 18 years<br>150 lbs |
| user height:<br>24" - 35"                      | user height:<br>34" - 50"                     | user height:<br>42" - 65"                      |
| footrest dimension<br>18"W x 12"D              | footrest dimension<br>21"W x 12"D             | footrest dimension<br>22"W x 11.7"D            |
| base - W x L<br>22" x 32"                      | base - W x L<br>26" x 45"                     | base - W x L<br>26" x 45"                      |
| footrest → chest board<br>17" - 26"            | footrest → chest board<br>20" - 37"           | footrest → chest board<br>28" - 57"            |
| tray size<br>17" x 20"                         | tray size<br>19" x 24"                        | tray size<br>26" x 23"                         |
| floor → chest board<br>27"                     | floor → chest board<br>42"                    | floor → chest board<br>57"                     |

## SUPINE STANDER MEASUREMENTS

| Small<br>Coming in July**                   | Medium                                       | Large   |
|---|--|---|
| user age + weight:<br>0 - 6 years<br>70 lbs | user age + weight:<br>4 - 10 years<br>90 lbs | user age + weight:<br>7 - 14 years<br>160 lbs |
| user height:<br>31.5" - 47.2"               | user height:<br>33" - 55"                    | user height:<br>53" - 65"                     |
| footrest dimension<br>15.7"W x 14.1"D       | footrest dimension<br>22"W x 12"D            | footrest dimension<br>25"W x 16"D             |
| base - W x L<br>21.6" x 43.7-47.7"          | base - W x L<br>22" x 42"                    | base - W x L<br>29.5" x 45.5"                 |
| footrest → chest board<br>53.5" - 57.5"     | footrest → chest board<br>33.5" - 55"        | footrest → chest board<br>53" - 59"           |
| tray size<br>11"D x 20"W                    | tray size<br>17"D x 24"W                     | tray size<br>19"D x 28"W                      |
| range to supine in<br>degrees: 180 - 90     | range to supine in<br>degrees: 180 - 90      | range to supine in<br>degrees: 180 - 90       |